



fTf“fvf<fo□[fWf#f“ fwf<fv

,í,ñ,ß,É,“Ç,Ý,,¾,³,ç

‘€□i•û-@

,,q,b,`,c,d ,l,n,c,d

VS ,l,n,c,d

VS for MULTIPLAYER

fLfff%ofNf^□[

fTf%oo

fSfif“

Í, 1, 3, É, "Ç, Ý, 3/4, 3, Ç

[-, ±, ì\ftfg, íTf"fvf<fo [fWf#f" , ì, 1/2, ßA 1/2, , ì<@ "\, aCEÀ'è, 3, è, Ä, " , è, Ü, ·B
, Ü, 1/2 A x " , ìfof%of" fX, a A > " i" Ä, Æ, í^Ü, È, é" " a, à, 2, ' , Ç, Ü, ·B
, , Ç, ©, 1, 3, 2-1 3, 3/4, 3, Ç B

CE' N ã, ì, 2' ^ Ó

[-, 2, , Ü, è, É, Ç, CE ò, ìŽhCEf, â" - Å Af, fff ^ %æ - Ê, È, Ç, ðCE ©, Ä, Ç, Ä A
^ êŽŽ" I, È<Ø " ÷, ì, " , Ç, è, ñ E ^ Ó Ž " , ì' r Ž " " " , ì Ç Ó, ð<N, ±, ·I, a, Ç, Ü, ·B
, ±, x, µ, 1/2 CE o CE ±, ì, , é•û, í A, ±, ì\ftfg, ðŽg - p, , é' O, È•K, ^ ä Ž t, Æ' Š' k, µ, Ä, , 3/4, 3, Ç B
, Ü, 1/2 A Žg - p' t, È, ±, ì, æ, x, È Ç Ó, a<N, «, 1/2, Æ, «, í A, , ©, È Žg - p, ð, à, ß A ^ ä Ž t, ì f Ž @, ð Ž ó, " , Ä, , 3/4, 3, Ç B

[-, ±, ì\ftfg, ðŽg - p, , é, Æ, «, í A " " % ©, ð - 3/4, é, , µ A, È, é, x, f, fff ^ %æ - Ê, ©, Ç - f, è, Ä, , 3/4, 3, Ç B
, Ü, 1/2 A CE' N, ì, 1/2, ß A 1 Ž Ž Š Ö, 2, Æ, È 10 " 20 • a, ì x CE e, ð, Æ, è A " æ, è, Ä, Ç, é, Æ, «, â ÷ - ° • s' <, Ä, ì Žg - p, í" ð, " , Ä, -
, 3/4, 3, Ç B

**[-, ±, ìTf"fvf<fo [fWf#f" , ð-3' f, Å • i > , , é, ±, Æ, " , æ, Ñ' À' Ý<Æ, È Žg - p, , é, ±
, Æ, ð<Ö, 1, Ü, ·B**

, ±, ìfwf<fvftf@fCf<, È Žg, í, è, Ä, Ç, éOf%oftfBfbfN, íŠj" ' t, ì, à, ì, Å A Ž À Ü, ìfQ [f€ , ì, à, ì, Æ, í ^ è " ^ Ü, È, é [è ÷, a, , è, Ü, ·
B, 2-1 3 % 0, 3, Ç B
, Ü, 1/2 A, ±, ìfQ [f€, í A Ž © " © " I, ÈfQ [f€fvfCfC, ì ì • ñ, ðfn [fhfffBfxfN, È<L ~ ^ , µ, Ü, ·B
fZ [fuff [f ^ , a % ó, è, é<, è, a, , è, Ü, , ì, Å AfQ [f€<N " © ' t, ÈfRf " fsf... [f ^ , ì " dCE 1, ð Ø, Ä, 1/2, è Af Š fZfbfg, ð, " , ±
, È, Ä, 1/2, è, µ, È, Ç, Ä % 0, 3, Ç B



***Virtua Fighter 2, à € ì • ù - @, É, Â, ç, Ä à - ¾, µ, Ü, · B**

Virtua Fighter 2, í A ^ È % °, ì € ì, É, Ä v f ç f C, ·, é Ž -, º, Â, «, Ü, · B
í f N f Š f b f N, µ, Ä A Ú, µ, ç ' € ì • ù - @, ð, ² —, , ¾, ³, ç j

- , P F L [f { [f h, É, æ, é ' € ì i, P, o ' x j**
- , Q F L [f { [f h, É, æ, é ' € ì i, Q, o ' x j**
- , R F P C f Q [f € f p f b f h i, S f { f ^ f " j, É, æ, é ' € ì**
- , S F P C f W f † C f X f e f B f b f N i, S f { f ^ f " j, É, æ, é ' € ì**

í - f Q [f €, ì « Ž ÿ ä A f Q [f € f p f b f h A f W f † C f X f e f B f b f N, Â, ì € ì, ð, " , ·, ·, ß, µ, Ü, · B, ±
ì è # A f L f f f S f u f ç [f v f † " , º • K - v, Â, · B

í f ' ì ^ Ó i , ,

f Q [f €, ì « Ž ÿ ä A f Q [f € f p f b f h E f W f † C f X f e f B f b f N, í A " ü — í f { f ^ f " , º, S, Â ^ È ä , , é, à, ì, ð, ² —
p ^ Ó , , ¾, ³, ç B, » , é ^ È S O, ì " ü — í « @ Š í, Â, ì ³ í " ® ì, í A, ±, é, ð • Ü Ø, ç, ½, µ, Ü, ¹, ñ B

,P FfL [f { [fh,É,æ,é'€ ì i,P,o'x j

fQ [f€'t F

m^a n•û CEü ifWfff“fv j F,v

m< n•û CEü i,µ,á,ª, P j F,r

m© n•û CEü^Ú“ ® F,`

m n•û CEü^Ú“ ® F,c

**i%o;•û CEü,ì^Ú“ ®,ì ê± A'f“,“ñ%ñ~A'±,Å“ü—Í,·,é,±,Æ,É,æ,è A
'Of_fbfVf... AfofbfNf_fbfVf...,É,È,è,Û,· j**

fK [fh F,u

fpf“f` F,f

fLfbfN F,g

fXf^ [fg^ PAUSE i PAUSE%oð œ j FZ

PAUSE i PAUSE%oð œ j F,e,R

ŠeŽí'ì'ðŽž F

ã F,v

%oº F,r

¶ F,`

%oE F,c

CE^è F,u^,g^,d,m,s,d,q

fLfff“fZf< F,f

,Q FjL [f { [fh, É, æ, é '€ ì i, Q, o 'x j

fQ [f€ 't F

m^an • ũ CE ũ ifWfff "fv j Fj [f f < fL [m^an
m < n • ũ CE ũ i, μ, á, ð, P j Fj [f f < fL [m < n
m © n • ũ CE ũ " ũ " © Fj [f f < fL [m © n
m " n • ũ CE ũ " ũ " © Fj [f f < fL [m " n
i % i • ũ CE ũ, ì " ũ " ©, ì ê ð † A ' f " , " ñ % ñ ~ A ' ±, Å " ü — Í, ·, é, ±, Æ, É, æ, è A
'Of_fbfVf... AfofbfNf_fbfVf... É, È, è, Û, · j

fK [fh FDelete

fpf "f FEnd

fLfbfN FPage Down

fXf ^ [fg ^ PAUSE i PAUSE % ð œ j FEnter

PAUSE i PAUSE % ð œ j F, e, R

ŠeŽ í ' ð Ž ž F

ã F fj [f f < fL [m^an
% ð F fj [f f < fL [m < n
¶ F fj [f f < fL [m © n
% ð E F fj [f f < fL [m " n
CE ^ è F Delete ^ , o, †, ... , c, , —, Ž ^ , d, m, s, d, q
fLfff "fZf < F End

,R□FPCfQ□[f€fjfbfh□i,Sf{f^f“□j,É,æ,é‘€ì

fQ□[f€‘t□F

□ã%□□ifWfff“fv□A,μ,á,a,Ÿ□j□□%□E,ì•ûCEü^Ú“ @□F•ûCEüfL□[
□i%□j•ûCEü,í^Ú“ @,ì□ê□±□A‘f“□,“ñ%□ñ~A‘±,Å“ü—í,·,é,±,Æ,É,æ,è□A
‘Of_fbfVf...□AfofbfNf_fbfVf...É,È,è,Û,·□j

fK□[fh□F,S,Â,ìf{f^f“ ,ì,ç, ,é, ©,Ö□A”C^Ó,ÉŠ,,,è“- ,Ä,Ä,,³/₄,³,ç□B
fpf“f □F,S,Â,ìf{f^f“ ,ì,ç, ,é, ©,Ö□A”C^Ó,ÉŠ,,,è“- ,Ä,Ä,,³/₄,³,ç□B
fLfbfN□F,S,Â,ìf{f^f“ ,ì,ç, ,é, ©,Ö□A”C^Ó,ÉŠ,,,è“- ,Ä,Ä,,³/₄,³,ç□B
fXf^□[fg□^PAUSE□iPAUSE%□□œ□j□F,S,Â,ìf{f^f“ ,ì,ç, ,é, ©,Ö□A”C^Ó,ÉŠ,,,è“- ,Ä,Ä,,³/₄,³,ç□B
PAUSE□iPAUSE%□□œ□j□F,e,R

ŠeŽí‘í‘đŽž□F

□ã%□□□□%□E,ì•ûCEü^Ú“ @□F•ûCEüfL□[
CE^è□FfK□[fh□^fLfbfN,ÉŠ,,,è“- ,Ä,ç,é,¹/₂f{f^f“
fLfff“fZf<□Ffpf“f` ,ÉŠ,,,è“- ,Ä,ç,é,¹/₂f{f^f“

,S[FPCfWf†CfXfefBfbfN[i,Sf{f^f“[j,É,æ,é‘€[i

fQ[[f€‘†[F

ã%°ifWfff“fv[A,μ,á,³,Ý[j[1%°E,ì•ûCEü^Ú“®[F•ûCEüfCEfo[[
i%°i•ûCEü,í^Ú“®,l[é[†[A‘f“[“ñ%°ñ~A‘±,Å“ü—Í,·,é,±,Æ,É,æ,è[A
‘Of_fbfVf...[AfofbfNf_fbfVf...[É,È,è,Û,·[j

fK[[fh[F,S,Â,lf{f^f“,ì,ç,,é,©,Ö[A”C^Ó,ÉŠ,,è“-,Ä,Ä,,¾,¾,ç[B
fpf“f^F,S,Â,lf{f^f“,ì,ç,,é,©,Ö[A”C^Ó,ÉŠ,,è“-,Ä,Ä,,¾,¾,ç[B
fLfbfN[F,S,Â,lf{f^f“,ì,ç,,é,©,Ö[A”C^Ó,ÉŠ,,è“-,Ä,Ä,,¾,¾,ç[B
fXf^[[fg[^

PAUSE[iPAUSE%°ð[œ[j[F,S,Â,lf{f^f“,ì,ç,,é,©,Ö[A”C^Ó,ÉŠ,,è“-,Ä,Ä,,¾,¾,ç[B
PAUSE[iPAUSE%°ð[œ[j[F,e,R

ŠeŽí‘I‘ðŽž[F

ã%°[1%°E,ì•ûCEü^Ú“®[F•ûCEüfL[[
CE^è[FfK[[fh[^fLfbfN,ÉŠ,,è“-,Ä,ç,è,½f{f^f“
fLfff“fZf<[Ffpf“f` ,ÉŠ,,è“-,Ä,ç,è,½f{f^f“

q,b,`c,d ,l,n,c,d

AARCADÉ MODE, A, B

SEGA ENTERPRISES, LTD. 1994, 1995

q,b,`c,d,l'ö



SEGA ENTERPRISES, LTD. 1994, 1995

SARAH



SARAH

,±,lfTf"fvf,fo□[fWf#f",Á,í□AfWffffbfL□[,Æ□w'é,ðŽg—p,·,é,±,Æ,^a,Á,«,Ü,·□B

#BfQ□[f€fXf^□[fg

ŽŽ□#šJžn,Á,·□B'S—í,ð□s,,μ,Ä'SŽè,Æ□í,ç,Ü,μ,â,π□B

□í"~%œ-Ě

#C,PfZfbfg□I—¹

□Ÿ—~□ðœ□,ð-ž,½,·,·,©□A^ø,«•^a,·,é,Æ,PfZfbfg□I—¹□B'OŽÒ,ì□é□#fEfbfi□[,ì□Ÿ—~f□[fY,^a•\Ži,³,é,Ü,·□B
,Ü,½□A,j□D,n,©fšf"fOfAfEfg,ì□é□#,ì□A,»,ì□uŠÖ,lfšfvfçEfc,^a'}“ü,³,é,Ü,·□B
fšfvfçEfc,ì□A□s,f□t,©□s,y□t,ÁfXfLfbfv%œ“Á“\,Á,·□B

#DŽŸ,lfZfbfgšJžn

,PfZfbfgžæ“¾,·,é,Æ□AŽŸ,lfZfbfg,^ažn,Ü,è,Ü,·□B
,±,é,ð·K'è,lfZfbfg□",ð□æžæ,·,é,Ü,ÁçJ,è•Ö,μ,Ü,·□B
^ø,«•^a,·□i,c,q,·,v□žž,É,í“Á•É,É—¼žÖ,Æ,à,PfZfbfgžæ“¾,É,È,è,Ü,·□B
,Ü,½□A—¼žÖ,Æ,à“~fZfbfgžæ“¾,μ,Ä,ç,Á□A,·Æ,PfZfbfg,Á□Ÿ,ž“²,·,é□ó'Ö,Á^ø,«•^a,·,é,ÆfTfhf“fffX,É,È,è,Ü,·□B

fZfbfg□Ÿ'è,ì•ì□X

#E,PfXfe□[fWfNfšfA

Šù'è,lfZfbfg□"□i□%Šú□Ÿ'è,Á,í,QfZfbfg□j,ð□æžæ,·,é,Æ,PfXfe□[fWfNfšfA,Æ,È,è□AŽŸ,lfXfe□[fW,É□i,p,±
,Æ,^a,Á,«,Ü,·□B□»•i"Á,Á,ì□ACE»□Ÿ'I'ð,μ,Ä,ç,éflfff%ofNf^□[,Æ“~fLfff
%ofNf^□[,ì'í□í,àšÜ,ß,Ä□ACEv,p,OfXfe□[fW,ð□Ÿ,ž“²,ç,Á,ç,·,±,Æ,É,È,è,Ü,·□B

□%Šú□Ÿ'è,Á,ì□A,P□Ÿ•%o,RfZfbfg□□~□A,QfZfbfg□æžæ,μ,½•û,ª□ŸžÖ,Æ,È,è,Ü,·□i,±,ì□Ÿ'è,ì•ì□X%œ“Á“\
,Á,·□j□B

□Ÿ'è,ì•ì□X□iARCADE MODE,ìOPTION□j

Ÿ–~ø

fZfbfg,²,Æ,ìŸ–~ø

‡@æ,É‘ŠŽè,ì‘ì–í,ð,O,É,·,éF

%æ-É“”É·Ž!;³,é,Ä,ç,éA“G,ì‘ì–íQ[fW,ðA§CEÀŽžŠÔ“à,É‘ŠŽè,æ,è‘,-
Š‘S,É‘D,Á,ÄfmbfNfAfEfg,^{3,1},é,ÆA,PfZfbfg‘DŽæ,Æ,È,è,Û,·B

‡Af^fCf€fi[fø[ŽžA‘ŠŽè,æ,è‘ì–í,²½,çF

§CEÀŽžŠÔ“à,É–¼ŽÒ,ì‘ì–íQ[fW,²,ç,ç,àA,O,É,È,ç,È,©,Á,½ê‡,íA‘ì–íQ[fW,ìŽc–
È,ì‘½,ç·ú,²Ÿ,ç,Æ,È,èA,PfZfbfg‘DŽæ,Æ,È,è,Û,·B

‡B‘ŠŽè,ðfŠf“fO,©,ç–Ž,Æ,·F

fLfbfN,âpf“f,É,ç,ÄA‘ŠŽè,ðfŠf“fO“ã,©,ç–Ž%^{2,3,1},é,ÆA–¼ŽÒ,ì‘ì–íQ[fW,ìŽc–
È,ÉŠÖCEW,È,A–Ž%^{2,3,1}½·ú,ì,PfZfbfg‘DŽæ,Æ,È,è,Û,·B

fXfe[fW,ìŸ–~ø

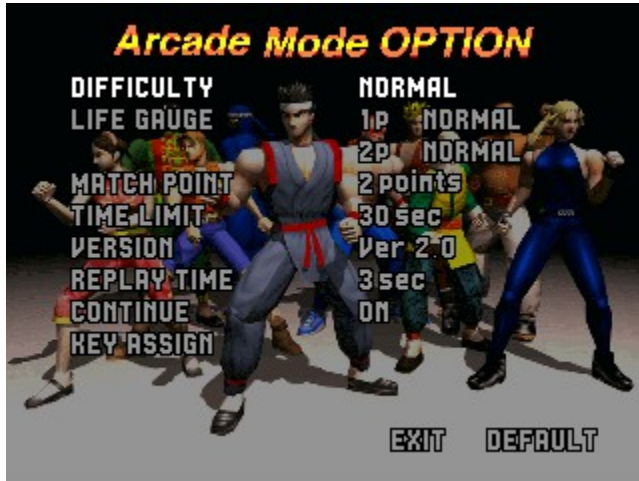
æ,É‘K’è”,ìfZfbfg‘DŽæ,μ,½·ú,²AŸŽÒ,Á,·B

%ŠúŸ’è,Ä,íA,PŸ·%,RfZfbfg\–A,QfZfbfgæžæ,μ,½·ú,²ŸŽÒ,Æ,È,è,Û,·i,±,ìŸ’è,í·ïX
%Ä”,Ä,·jB

ARCADE MODE, OPTION

ARCADE MODE OPTION

DIFFICULTY NORMAL
 LIFE GAUGE 1P NORMAL
 MATCH POINT 2P NORMAL
 TIME LIMIT 2 points
 VERSION 30 sec
 REPLAY TIME Ver 2.0
 CONTINUE 3 sec
 KEY ASSIGN ON



DIFFICULTY NORMAL
 LIFE GAUGE 1P NORMAL
 MATCH POINT 2P NORMAL
 TIME LIMIT 2 points
 VERSION 30 sec
 REPLAY TIME Ver 2.0
 CONTINUE 3 sec
 KEY ASSIGN ON
 EXIT DEFAULT

V S ,l,n,c,d

□-,±,ìfTf“fvf<fo□[fwf#f“ ,Á,í□AfTf%o,Æfšflf“ ,ì,QfLfff%ofNf^□[,ð'í'ð,μ,Ä'í□í,·,é,± ,Æ,ª,Ä,« ,Ü,·□B

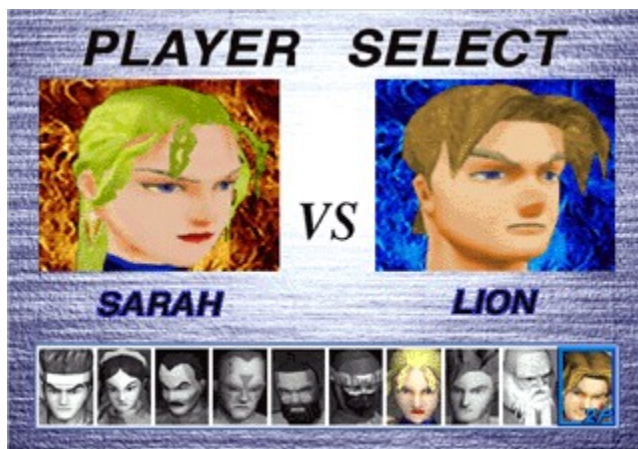
^È%o°□A#□`#E,ì—,ê,Ä□i,ñ,Ä,ç,« ,Ü,·□B
Žg—p,·,éfl□[,ì-¼□[,í□A,P,o'x,ìfL□[f{□[fh□i,P,O,PfL□[f{□[fh□A□%oŠú□Ý'è□j,ÁfvfçEfc,μ,½,Æ,« ,ð'z'è,μ,Ä,ç ,Ü,·□B

,u,r ,l,n,c,d,ì'í'ð



fQ□[fçf^fcfgf%oæ-È,ª·\Ž!,³,è,Ä,ç,é,Æ,« ,ÉfXf^□[fgfL□[□i,y□j,ð%oÝ,·,Æ□Af,□[fh'í'ð%oæ-È,ª·\Ž!,³,è,Ü,·□B
,±,ì%oæ-È,Ä□AfL□[f{□[fh,ì•ûCEüfL□[,ì□ã%o°,ð%oÝ,μ,Ä,u,r ,l,n,c,d,Éfj□[fç<,ð^Ú“ @ ,³,¹□A
□s,u□t,©□s,g□t,ð%oÝ,·,ÆfLfff%ofNf^□[fZfçEfcNfg%oæ-È,É,È,è,Ü,·□B

#AfLfff%ofNf^□[fZfçEfcNfg%oæ-È



•ûCEüfL□[,ì□i%oE,ð%oÝ,·,Æ□Afj□[fç<,ª^Ú“ @ ,μ,ÄfLfff%ofNf^□[,ìŠç,ìfAfbfv,Æfvf□ftfB□[f<,ª·\Ž!,³,è,Ü,·□B
Žg—p,·,éflfff%ofNf^□[,ð'í'ð,μ,½,ç□A□s,u□t,©□s,g□t,ð%oÝ,μ,ÄCE^'è,μ,Ä,³/₄,³,ç□B
,±,ìfTf“fvf<fo□[fwf#f“ ,Á,í□AfWfffbfL□[,Æ□w'è,ðŽg—p,·,é,±,Æ,ª,Ä,« ,Ü,·□B

†BfQ [f€fxf^ [fg

ŽŽ†ŠŽn, Ā, ·B'S—í, ðs, , μ, Ā'SŽè, Æfi, ç, Ü, μ, ā, xB

í“~%œ-Ê

†C, PfZfbfg [I—¹

Ÿ—~ðœ, ð-ž, ½, , ©A^ø, «•ª, ¯, é, Æ, PfZfbfg [I—¹B'OŽÒ, ìê†fEfBfi[, ìŸ—~f [fY,ª•\Ž!,ª,è,Ü, ·B
, Ü, ½A, jD, n, ©fŠf“fOfAfEfg, ìê†, íA, » , ìuŠÓ, ìšfvfœfC,ª'}“ü,ª,è,Ü, ·B
fŠfvfœfC, íA s, f t, ©s, y t, ĀfXfLfbfv%Å“\, Ā, ·B

†DŽŸ, ìfZfbfg ŠŽn

, PfZfbfg Žæ“¾, , é, ÆAŽŸ, ìfZfbfg,ªŽn, Ü, è, Ü, ·B
, ±, è, ðŠù'è, ìfZfbfg“æŽæ, , é, Ü, ĀœJ, è•Ö, μ, Ü, ·B
^ø, «•ª, ¯i, c, q, ` , v j Žž, É, í“Á•É, É—¼ŽÒ, Æ, à, PfZfbfg Žæ“¾, É, È, è, Ü, ·B
, Ü, ½A—¼ŽÒ, Æ, à“~fZfbfg Žæ“¾, μ, Ā, ç, ĀA, , Æ, PfZfbfg, ĀŸ, ž”², ¯, éó'Ô, Ā^ø, «•ª, ¯, é, ÆfTfhf“ffX, É, È, è, Ü, ·B

‰ŠúŸ'è, Ā, íA, PŸ•‰, RfZfbfg [[A, QfZfbfg æŽæ, μ, ½•ù,ªŸŽÒ, Æ, È, è, Ü, ·i, ±, ìŸ'è, í•ìX‰Å“\
, Ā, ·B

Ÿ'è, ì•ì [X [i, u, r MODE, ìOPTION [j

,U, r MODE, iOPTION

fLfff%ofNf^[]['i'ð%œ-Ê,ÁF5,ð%ÿ,·,Æ[]A,u,r MODE[]ê—pOPTION%œ-Ê,Ö^Ú[]s,μ,Û,·[]B
 •úŒúfL[][[]ã%œ,Á[]Y'è,μ,½,ç[]€-Ú,ð'i'ð,μ[]A[]1%œE,lfL[][,Á[]Y'è,ð[]s,Á,Ä,,¾,¾,ç[]B

,±,±,Á,í^È%œ,ì[]€-Ú,ð[]Y'è,·,é,±,Æ,ª,Á,«,Û,·[]B
 -{f}ftfg,íftf“fvf<fo[][fWf}f“ ,ì,½,ß[]A,ç, ,Á,©,ì[]€-Ú,í'i'ð,·,é,±,Æ,ª,Á,«,È,ç,æ,ª,É,È,Á,Ä,ç,Û,·[]B



LIFE GAUGE []F,P,o[]A,Q,o,ì'i—í[]Y'è,ð,μ,Û,·[]B
MATCH POINT []F,Pžž[]ž,E,~,ç,Á[]Y—~,·,é,½,ß,ì[]A•K—vžæ“¾fZfbfg[]”,ð[]Y'è,μ,Û,·[]B
TIME LIMIT []F,PfZfbfg't,ì[]šŒÀžžšÖ,ð[]Y'è,μ,Û,·[]B
VERSION []Ffo[][f ffftf@fCf^[][,Q,ìfo[][fWf}f“ ,ð•ì[]X,·,é,±,Æ,ª,Á,«,Û,·[]B
 fo[][fWf}f“ ,Q[]D,P,ì[]A[]x,©,Éfof%of“fX,ì'²[]©,ª[]s,í,è,½fo[][fWf}f“ ,Á,·[]B
REPLAY TIME []FfSjvfŒfc,ižžšÖ,ð[]Y'è,·,é,±,Æ,ª,Á,«,Û,·[]B
KEY ASSIGN []FfL[][[]Y'è,ð[]s,ç,Û,·[]BÚ,μ,,ì,±,ç,ð,²—,,¾,¾,ç[]B
EXIT []Ffifvf}f}f“f,[][fh,ð[]l—¹,μ,Û,·[]B
DEFAULT []F'S,Á,ì[]Y'è,ð[]A[]%šú[]Y'è,É-ß,μ,Û,·[]B

V S for MULTI PLAYER

□-□IŠÔ'î□IŠÔ,ì,Q□I,Â'Ê□MfvfĀfC'î□í,·,é,o,b"ĀfifŠfwfif<f,□[fh,Ā,·□B

,±,îf,□[fh,đ'í'đ't,í□AfQ□[f€□I—¹[Alt+F4] ,đ□œ,«□Af□ffj...□[fo□[Ā,İŠeŽí□Y'è•İ□X,đ□s,±,±,Æ,í,Ā,«,Ü,¹,ñ□B

□y'Ê□M'î□í,ìŽd•û□z

f^fCfjg<%œ-Ê,©,ç□AVS for MULTI PLAYER,đ'í'đ,·,é,Æ□AVS for MULTI PLAYERf,□[fh,É"ü,è,Ü,·□B

'Ê□M,É,í□u'î□í'SŽè,đ'Ò,Ā□é□#□v,Æ□u'î□í'SŽè,ª'Ò<@,μ,Ā,č,é□é□#□v,ª, ,è,Ü,·□B,±,±,Ā,í,Q,Ā,ì•û-@,É,Ā,č,Ā□à-¾,μ,Ů,·□B

- 'í□í'SŽè,đ'Ò,Ā□é□#□!
- 'í□í'SŽè,ª'Ò<@,μ,Ā,č,é□é□#□!
- U'±•ûZ®,É,Ā,č,Ā
- 'Ê□M'î□í't,îf fffbfq

Ú±•ûŽ®,É,Â,ç,Ä

hPX Connection For Direct play

SPX/IPX'í%ž,ìLAN,ð,²Žg—p,ìê†'í'ðB
iSPX/IPX,É'í%ž,μ,½LANŠÁ<<,ª•K—v,Ä,•Bj

Internet TCP/IP Connection For Direct play

Internet TCP/IP'í%ž,ìLAN,ð,²Žg—p,ìê†'í'ðB
iInternet TCP/IP,É'í%ž,μ,½LANŠÁ<<,ª•K—
v,Ä,•B,Û,½Ž-'O,É'ŠŽè,ÆfvfçfCŽžŠÖ,ð'Ä,¿†,í,¹,Ä,,¾,³,çBj

Modem Connection For Direct play

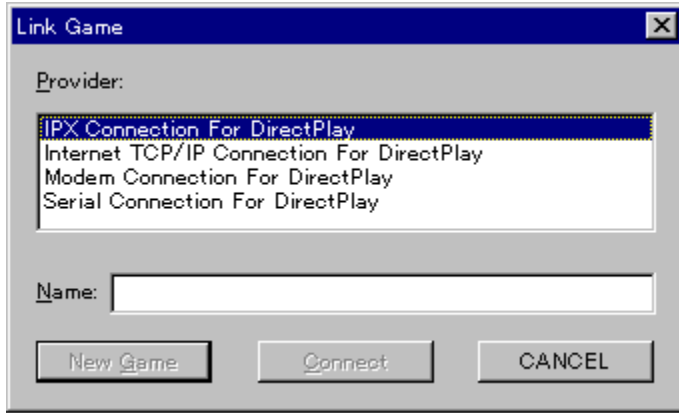
"d~b%ňü,Á'ÉMfvfçfC,ðs,¸ê†'í'ðB
i"d~b%ňüAWindows95'í%žf,fff€i9600bps^Èã•K{A14400bps^Èã„,„\$j,ª•K—
v,Ä,•B,Û,½Ž-'O,É'ŠŽè,ÆfvfçfCŽžŠÖ,ð'Ä,¿†,í,¹,Ä,,¾,³,çBj

Serial Connection For Direct play

'ÉMf|[fg,ðŽg—p,μA'¼ÚPC“~Žm,ðÚ±,μ,Ä'ÉMfvfçfC,ðs,¸ê†'í'ðB|i'ÉMf|[fgÚ±—
p,lP|[fuf<,ª•K—v,Ä,•Bj



Provider for MULTI PLAYER, ð, í, ð, é, Æ, A, È
%º, ì, f, E, f, C, f, "f, h, f, E, a, ð, ç, «, Ü, ·, B, i, ±, ì, ó, Ô, Á, CANCEL, ð, í, ð, é, Æ, f, ^, f, C, f, g, f, <, %º, æ-È, É-ß, è, Ü, ·, B, j



Provider, ©, ç, A, È, M, û, Ž, ®, ð, í, ð, µ, Ü, ·, B
È, M, û, Ž, ®, Í

- Internet TCP/IP Connection For Direct play
- EWinSock IPX Connection For Direct play
- EModem Connection For Direct play
- ESerial Connection For Direct play

, ì, †, ©, ç, í, ð, Á, «, Ü, ·, B

Ú, ±, û, Ž, ®, É, Á, ç, Ä

Name, É, Ž, ©, a, ì, ¼, O, ð, ü, í, µ, Ü, ·, B
, ·, Ä, É, ·, \, Ž, !, ³, è, Á, ç, é, ¼, O, É, -à, è, a, É, -, è, Í, "ü, -í, ì, ·, K, -v, í, , è, Ü, ¹, ñ, a, A
'Š, Ž, è, É, a, ©, è, à, ·, ç, æ, x, É, %º, S, ú, Y, 'è, ì, ¼, O, ©, ç, Š, Ž, è, É, a, ©, è, à, ·, ç, ¼, O, É, ·, é, Ž, -ð, "Š, ©, ß, µ, Ü, ·, B

New Game, ð, f, N, f, Š, f, b, f, N, µ, Ü, ·, B

Modem Connection, ð, í, ð, µ, ½, ê, ‡, F
New Game, ì, ð, Ç, È, ä, A, f, f, f, f, €, Y, è, f, E, f, C, f, "f, h, a, ·, \, Ž, !, ³, è, Ü, ·, ì, Á, Ž, g, -p, f, f, f, f, €, ð, í, ð, µ, %º, ž, "š, ð, f, N, f, Š, f, b, f, N, µ, Ä, , ¾, ³, ç, B

Serial Connection, ð, í, ð, µ, ½, ê, ‡, F
, b, n, l, f, [, f, g, ì, Y, 'è, a, ·, \, Ž, !, ³, è, Ü, ·, ì, Á, A, », ì, Y, 'è, Á, -ç, -, è, Í, %º, ž, "š, ð, %º, Y, µ, Ä, %º, ³, ç, B
, ç, , , è, à, A, ·, X, í, ±, ì, i, Š, K, Á, s, Á, Ä, %º, ³, ç, B
^, è, "x, A, %º, ž, "š, ð, %º, Y, µ, Ä, ©, ç, l, f, f, f, "f, Z, f, <, µ, Á, Y, 'è, ð, ·, ì, , æ, x, Æ, µ, Ä, à, Y, 'è, f, p, f, l, f, <, a, Š, j, ©, È, ç, ±, Æ, a, , è, Ü, ·, B
, ±, ì, ê, ‡, Í, A, f, Q, [, f, €, ð, x, N, "®, µ, ¼, ·, µ, ©, , è, Ü, ¹, ñ, B

Waiting for Connection, a, ð, ç, «, A, È, M, Ò, ©, ó, Ô, Æ, È, è, Ü, ·, B

Provider for MULTI PLAYER, ð, í, ð, é, Æ, A, Ž, ©, ®, í, É, Ú, ±, ³, è, A, f, Q, [, f, €, a, Ž, n, Ü, è, Ü, ·, B

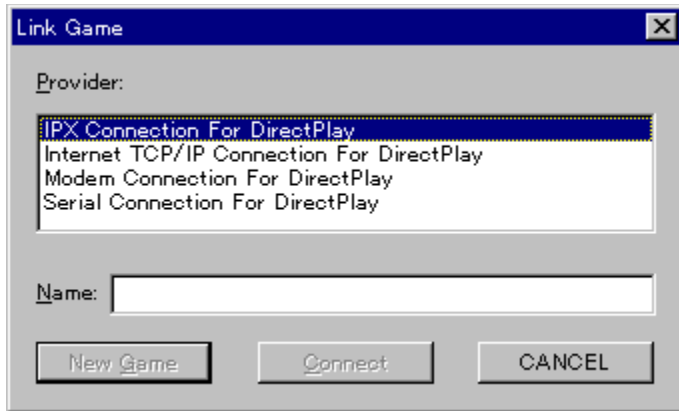
Provider for MULTI PLAYER, ð, í, ð, µ, æ-È, É, È, è, Ü, ·, B
, P, o, x, , É, È, Á, Ä, ç, Ü, ·, ì, Á, A, f, l, f, f, f, %º, f, N, f, ^, [, ð, í, ð, µ, A, , Æ, Í, f, v, f, C, f, C, ð, s, Á, Ä, %º, ³, ç, B

Provider for LAN, ð, ², Ž, g, -p, ì, ê, ‡, A, f, l, f, b, f, g, f, [, N, ì, ó, Ô, É, æ, Á, Ä, Q, [, f, €, ì, -"x, a, ~, µ, 'x, , È, é, ê, ‡, à, A, f, Q, [, f, €

,^at'f,³,ê,é \square ê \square †,^a, ,è,Û,· \square B



P Provider for MULTI PLAYER, ð'ð, ·, é, Æ A È
%º, lfEfCf"fhfE, ¢, Ð, ç, «, Ü, · B
i, ±, ì, ó, Ò, Á CANCEL, ð'ð, ·, é, Æ f^fCfjf<%ºæ-È, É-ß, è, Ü, · B



Q Provider, ©, ç A Ê M • ů Ž ®, ð'ð, μ, Ü, · B
Ê M - @ Ž ®, í

- Internet TCP/IP Connection For Direct play
- EWinSock IPX Connection For Direct play
- EModem Connection For Direct play
- ESerial Connection For Direct play

, ì, t, ©, ç 'ð, Ä, «, Ü, · B

Ü ± • ů Ž ®, É, Ä, ç, Ä

Q Name, É Ž © • ¢, ì-¼ 'O, ð "ü-í, μ, Ü, · B

, ·, Ä, É • \Ž |, ¢, é, Ä, ç, é-¼ 'O, É-â'è, ¢, È, ¯, é, Ì "ü-í, · K-v, Í, , è, Ü, ¹, ñ, ¢ A 'Š Ž è, É • ¢, ©, è, â, ·, ç, æ, ¢, É
%º Sú Y'è, ì-¼ 'O, ©, ç Š Ž è, É • ¢, ©, è, â, ·, ç-¼ 'O, É, ·, é Ž-ð, ¯ Š ©, ß, μ, Ü, · B

R Connect, ð f N f Š f b f N, μ, Ü, · B

© © ©

Internet TCP/IP, ð'ð, μ, ½ é † F

'í 'Š Ž è, lfAfhfCfX, ì "ü-í %ºæ-È, ¢ • \Ž |, ¢, è, Ü, ·, ì, Ä A 'í, μ, ½, ç 'Š Ž è, ì IPfAfhfCfX, à, μ, lfzfXfg, ì-¼ 'O, ð "ü-í, μ, Ä, ¾, ç B

Modem Connection, ð'ð, μ, ½ é † F

"d~b"Ô†+ü-í, lf fCfAfOf{fbfNfX, ¢ • \Ž |, ¢, è, Ü, ·, ì, Ä A 'í, μ, ½, ç 'Š Ž è, ì "d~b"Ô†+ð "ü-í, μ, Ä
%º, ¢ B "d~b, ð, ©, ¯ Ž n, ß, Ü, · B

©

Serial Connection, ð'ð, μ, ½ é † F

, b, n, lf | [fg, ì 'ð fCfAfOf{fbfNfX, ¢ • \Ž |, ¢, è, Ü, ·, ì, Ä A fP [fuf<, ì Ü ±, ¢, è, ½ f [fg, ð'ð, μ, Ä
%º, ¢ B

f ^ Ó, ^ è "x A %º Ž "š, ð %º Y, μ, Ä, ©, ç fLfff "fzf<, μ, Ä Y'è, ð • í, æ, ¢, Æ, μ, Ä, à Y'è f p f f <, ¢ Š, ©, È, ç
, ±, Æ, ¢, è, Ü, · B, ±, ì é †, í AfQ [f€ , ð < N "®, μ'¼, ·, μ, ©, , è, Ü, ¹, ñ

S Select Session, É A í Q f € ' Ò < @ ' †, í v f C f C f, „ [^ ê — —, a • \ Ž |, 3, é, Ü, • B
, ±, ±, Ā í, μ, ½, † Š Ž è, Ì - ¼ ' O, ð ' I ' ð, μ A, n, j, ð f N f S f b f N, ·, é, Æ Waiting f _ f C f A f f O, Š J, «, Ü, • B
' Š Ž è, á Ú ±, μ, Ā, †, é, í, , È, Ì, É ©, , í, È, † ê †, Í A Retry, ð % Ÿ, μ, Ā, Ý, Ā % °, 3, † B
f, f f f €, ð, ² Ž g — p, Ì ê †, Í A " d ~ b Ú ±, á — — §, μ, Ā, ±, Ì ^ ê — —, a • \ Ž |, 3, é, é, Ü, Ā, É Ž á Š ±
, Ì Ž Ž Š Ō, á, ©, ©, è, Ü, • B

T j f Q f €, Š @ ' S, É Ú ±, 3, é, é, Æ A ' Ê M f Q f €, á X f ^ f g, μ, Ü, • B
f Q f €, á X f ^ f g, μ, ½, † L f f f % f N f ^ [, ð ' I ' ð, μ A, , Æ, í v f C f C, ð s, Ā, Ā % °, 3, † B
, ±, Ì ê † A f v f C f C f, „ [, Í 2 P ' x, Æ, È, è, Ü, • B

- ' Š Ž è, á í, É % ž, ¶, È, ©, Á, ½ ê †, Í LINK GAME f f C f " f h f E, É, à, Ç, è, Ü, • B

f ' ^ Ó I „ LAN, ð, ² Ž g — p, Ì ê † A f l f b f g f f f N, Ì ó ' Ō, É, æ, Ā, Ā f Q f €, Ì - " x, á ~, μ, ' x, -
, È, é ê †, á A f Q f €, á ' f, 3, é, é ê †, á, , è, Ü, • B



fuf%ofCfAf“fgCEZ’í,í□Afuf<□[fX□EfŠ□[‘æ,Q,ìCEì<½,Æ,à,ç,ì,éfTf“ftf%of“fvfXfR,É□¶,Ü,ê,é□B
 fuf%ofCfAf“fg%oÆ,íAf□fŠfj,Å,à—L□”,ì’â•x□<,Å, ,è□A,»,ì□à,ì”p,ç,ì’c•f,ª<à—,ðCE@,è”-
 ,Ä,½,±,Æ,É,æ,è’z,©,ê,½,à,ì,Å, ,é,ª□A-ç,¾%oB,³,ê,½<à—,ª%oÆ•ó,Æ,μ,Ä”`,ì,ç,ê,Ä,ç
 ,é,ç,μ,ç□B
 fWffffbfL□[,ìfCf“fffB□[fCE□[fX’t,ìŽ-CEì,ð²□, ,μ,Ä,ç,½fTf%o,í□A,»,ìŽ-CEì,ìŽdŠ|,¬□I,Å, ,é
 %oe,ì’g□D,É□A□f’v,³,ê,Ä,μ,Ü,ª□B
 ,»,μ,Ä^«,ì’g□D,É,æ,èf}fCf“fhfRf“fgf□□[f<,ðŽó,¬□AfWffffbfL□[,É’î,·,éŽh<q,Æ,μ,Ä’æ,P
 %oñSi“¬fg□[fif□f“fg,É’—,è□ž,Ü,ê,½□B,μ,©,μ□AS@’S,ÉfRf“fgf□□[f<,³,ê,Ä,ç
 ,É,©,Ä,½,½,β□AfWffffbfL□[,ð”|,¹, ,É□I,Ä,Ä,μ,Ü,ª□B
 ,»,ìCEä’g□D,ì,³,ç,É<—í,É’²□@,ð”p□—,É□s,ª□B□V,½,ÈfgfCE□[fjf“fO,ðŽó,¬,½”p□—,í□A,³,ç,É<—
 í,ÉŠi“¬f}fv□[f“,Æ,μ,Ä’æ“ñ%oñ,ìŠi“¬fg□[fif□f“fg,Ö’—,è□ž,Ü,ê,é□B

<Z>\

fTf%oo□Efuf%ofCfAf“fg□F<Z•\

□œ<L□t,ì□à-¾□F

,o□A,j□A,f,í,»è,¼,ê□Afpf“f□AfLfbfN□AfK□[fh,ð•\,μ,Û,•□B
-î^ó,í□A•ûCEüfL□[,ì“ü—í•ûCEü,ðZ!,μ□AfofCE□[,ì-î^ó,í□A'Z,ß,ì“ü—í,ð^ó-i,μ,Û,•□B

□œfRf}f“fh•\<L,í,P,o'x,ð'z'è,μ,Ä<L,³,è,Ä,ç,Û,•□B

基本攻撃

fXfgfCE□[fg□EfŠ□[fh (P)
 ↓
 fXfNf@fg□EfXfgfCE□[fg (P)
 f“f@□[fefBf]f<□EftfbfN□EfLfbfN (K)
 ↓
 f□□[fLfbfN (K)
 ↓
 f~fhf<fLfbfN (K)

振り向き攻撃

fofbfNfifbfNf<□Ef^□[f“ ←
 ←
 (P)
 fofbfNfXfsf“fLfbfN□Ef^□[f“ ←
 ←
 (K)

背後攻撃

f^□[f“□EfifbfNf< (K)
 f^□[f“□EfifbfNf<□i,a□j ←
 (K) (
 ↓
 (K))
 f^□[f“□Ef□□[fXfgfCE□[fg (K)
 (K)
 f^□[f“□EfLfbfN (K)
 f^□[f“□EfofbfNfXfsf“fLfbfN (K)
 (K)
 f^□[f“□Ef%ofCfWf“fofLfbfN ←

Ⓚ
f^[]f"[]Ef[][]fXfsf"fLfbfN Ⓚ

Ⓚ
f^[]f"[]Ef[][]fXfsf"fLfbfN[i,a]j ↓
Ⓚ

ダウン攻撃

fTfbfj[]f{[]f<fLfbfN Ⓚ
Ⓚ

fWfff"fSf"fOfj[]fXf^f"fv ↑
Ⓚ

fncfWfff"fvfj[]fXf^f"fv ↑
Ⓚ

小ジャンプ攻撃

fGf<f{[] [Ⓚ []iã[],'t]j
fXfefbfvfXfgfCE[]fg Ⓚ []i%°[]~'t]j
f%°fEf"fhfLfbfN Ⓚ

fXfefbfvf%°fEf"fhfLfbfN ↗
Ⓚ

fgf<f[]f[]fhfLfbfN ↗
Ⓚ

+
Ⓚ

fXfefbfvftfbfNfLfbfN Ⓚ ([]ã[],'t)
fXfefbfvfq[]f<fLfbfN Ⓚ (%°[],'t)

大ジャンプ攻撃

fWfff"fSf"fO[]EftfbfNfifbfNf< →
Ⓚ ([]ã[],'t)

fWfff"fvfLfbfN Ⓚ []i "žž []

fhf%°fSf"fLfbfN →
Ⓚ ([]ã[],'t)

f~fhf<fLfbfN Ⓚ ([]ã[],'t)

fq[]f<fLfbfN Ⓚ (%°[],'t)

fWfff"fv[]Ef[][]fo[][]EfLfbfN Ⓚ
Ⓚ ([]ã[],'t)

固有技

f%ofCfWf“fOfGf<f{[] (K)
(K)
f_fuf<fWf‡fCf“fgfofbfg (K)
(K)
(K)
fXfifbfvfofbfNfifbfNf< (K)
(K)
fXfDfG[]fXf}fbfVf... (K)
(K)
f_fuf<fLfbfN (K)
(K)
fXfsf“f^[]f“fLfbfN (K)
(K)
(K)
fXfsf“f^[]f“ (K)
(K)
(K)
(K)
f_fuf<fXfsf“fLfbfN (K)
(K)
(K)
(K)
fTf}[]f<fgfLfbfN ↖
(K)
fWfffbfNfifCftfLfbfN (K)
(K)
fWfffbfNfifCftfLfbfNfTfCh (K)
(K)
(K)
fj[]fLfbfN (K)
(K)
f_fuf<fXfefbfvfj[] (K)
(K)
(K)
(K)
f%ofCfWf“fOfj[] (K)
(K)
(K)
f_fbfVf...fj[] (K)
(K)



fCfŠf...[]fWf‡f“fLfbfN



f~f%oo[]fWf...fLfbfN



fXfsfjf“fOfLfbfN



fEfbfOfXf%ofCfT[]



fTfCfhftfbfNfLfbfN



fpf“f`fnfCfLfbfN



fnfCfLfbfN[]EfXfgfE[]fg



fpf“f`fTfCfhfLfbfN



fWfffu[]AfXfgfE[]fg



f_fuf<fpf“f`fXfifbfvfLfbfN



ftf%ofbfVf...fsfXfgf“fpf“f`[]i,`[]j



ftf%ofbfVf...fsfXfgf“fpf“f`[]i,a[]j



ftf%ofbfVf...fsfXfgf“fpf“f`[]i,b[]j



fRf“f{[]Ef%ofCfWf“fOfj[]





fRf“f{[]EFTf}[]f\·fg (K)



fRf“f{[]EFTf}[]f\·fg[]i,a[]j (K)



fRf“f{[]Ef%ofCfWf“fOfLfbfN (K)



fRf“f{[]Ef%ofCfWf“fOfLfbfN[]i,a[]j (K)



投げ技

ftf[]f“fgfX[]f\·fæfbfNfX (<B) (K)



flfbfNfufŠ[]fj[] (<B) (K)



fofbfNfhf[]fbfv ("wæä,©,ç) (K)





ftf%of“fX□“à,À,à—L□”,lž ŽY,đŽ□,Âf%oftf@□[f<%oÆ□B•\CEü,«,Í□q<ó<@ŽY<Æ,đ%oc,ň,Â,č
,é,ª□A—,l□čŠE,Â,Í•°ŠíŠJ”,đ□s,αŽ€,l□α□l,Æ,μ,Ä—L-¼,Â, ,é□B
,»,ň,È%oÆ’è,É□¶,Ü,è,½fŠfj”,l□A—c,č□, ©,çCEo%ocŽÖ,Æ,μ,Ä,l%op□Ě<³^ç,đŽ{,³,è,Ä,č,½□B
,»,l’†,É,Í□AŠi“¬<Z,l%op□Ě<³^ç,à, ,è□A•f,l•”%o°,Â, ,é<³Š~ ,©,çCE,ì,É,¶,p,æ,α,È“ÁCEP,đ
%oÜ,¹,ç,è,Ä,č,½□B,»,l<³Š~ ,l’†□’•□□p,đ□ê-â,Æ,μ,Ä, ”,è□A,»,lžž,Éâ¹â¥CE□,đ’@,«□ž,Ü,è,é□B
□\’ă,đCE},lžv□tSú,É“ü,é,Æ□A•f,l“Æ□Ü“l,Ě<³^ç,É’l,μ“ú-^,É”½Š’ ,đ•ø,«,l,¶,ß,é□B,»,μ,Ä, ,é“ú□
A,Â,č,É•f,Æ’l—š,·,é□B,»,μ,ÄCEû~ ,đ’±, -,é,α,ž□A•f,ª^è,Â,l’ň^Ä,đ□o,μ,½□B□;“x□s,l,é,é’æ“ň
%oň□čŠEŠi“¬fg□[fif□f“fg,Â—D□Ÿ,·,é,±,Æ,ª,Â,«,½,ç□A,»,lžž,lž©—R,É□U,é•’,α,±,Æ,đ<-
,»,α□A,Æ□BŽá,³,ä,l,l—l’¼,³,Æ□A~r,ÉŽ©□g,l, ,é”p,l□A,»,lđCE□,đ,l,Yfg□[fif□f“fg,ÖŽQ
%oÁ,·,é,±,Æ,É,È,é□B

<Z>\

fšfif“F<Z•\

œ<L†,ìà-¾F

,oA,jA,f,í,»è,¼,êAfpf“f AfLfbfN AfK[fh,ð•\,μ,Û,•B
-î^ó,íA•úCEüfL[,"ü-í•úCEü,ðŽ!,μ AfOfCE[,"î^ó,íA'Z,ß,ì“ü-í,ð^Ó-í,μ,Û,•B

œfRf}f“fh•\L,Í,P,o'x,ð'z'è,μ,Ä<L,³,ê,Ä,ç,Û,•B

Ⓚ

“Xï,Æ,x,•,çj

Ⓚ

%oo“Xï,©,Æ,x,•,çj

Ⓚ

Ⓚ

úS'Úï,¹,ñ,μ,ñ,^½,çj

Ⓚ

ça'Úï, ,Â,^½,çj

Ⓚ

Ⓚ

'e'Úï,^¾,ñ,^½,çj

Ⓚ

Ⓚ

Ⓚ

ú“w“]ï,¹,ñ,μ,â,x,í,ç,Ä,ñj

Ⓚ

Ⓚ

Ⓚ

ãR'Úï,±,x,μ,ã,x,^½,çj

Ⓚ

Ⓚ

Ⓚ

%ooú'Ú“w“]ï,©,¹,ñ,^½,ç,í,ç,Ä,ñj

Ⓚ

Ⓚ

Ⓚ

Ⓚ

Ⓚ

Ⓚ

“w~Aú“w“]ï,í,ç,ê,ñ,¹,ñ,μ,â,xj

Ⓚ

“w•à'|Žèï,í,ç,Û,»x,μ,ãj

Ⓚ

Ⓚ

“o“wú“w“]ï,Æ,x,í,ç,¹,ñ,μ,â,xj

Ⓚ

Ⓚ (

Ⓚ

Ⓚ)

“w“gë“w“]ï,í,ç,μ,ñ,¹,ñ,μ,â,xj

Ⓚ

Ⓚ

Ⓚ

Āē ū < r i, ±, x, 1, ñ, «, á, j



°ō ōš | < r i, ©, †, ©, «, á, j



°ō ōš | < r i, a j



(



)



—ž æ ù < r i, ç, , μ, â, x, «, á, j



"ò"] —ž 'ú i, ð, ä, ñ, ç, , 1/2, † j



"«ó Āē, | i, Āē, x, , x, °, «, μ, â, x j



"«ó" w Āē, | i, Āē, x, , x, í, †, °, «, μ, â, x j



—ž • à " x i, ç, , ù, Āē, x, , † j



i ã, 't j

ù • — 'ú i, 1, ñ, õ, x, 1/2, † j



š | " 'ú i, ©, Āē, x, 1/2, † j



'M"] < ó r i, 1, ñ, ä, ñ, x, «, á, j



"«ó æ ù < r i, Āē, x, , x, μ, â, x, «, á, j



i ã, 't j

'n' | æ ù < r i, ç, , » x, μ, â, x, «, á, j



i '... 'n' 1/4 'o j



"«ó —ž 'o x i, Āē, x, , x, ç, , » x, , † j



(ã, 't)

'μ" ò 'e 'ú i, ç, , â, x, ð, 3/4, ñ, 1/2, † j



i "žž j

"«ó —ž 'o 'ú i, Āē, x, , x, ç, , » x, 1/2, † j



(ã, 't)

"ò 't 'ú 'ú i, ð, ç, , ä, x, 1, ñ, 1/2, † j



(ã, 't)

—ž • € n 'ú i, ç, , ó, 1, ñ, 1/2, † j



(°, 't)

"«ó —ž" w 'ú i, Āē, x, , x, ç, , í, †, 1/2, † j



Ⓚ (ã, 't)

Ⓚ

ú%oA¶¶i,¹,ñ,ç,ñ,µ,â,µⓀ Ⓚ

Ⓚ

—ŽCE,¶¶i,ç,,«µ,â,µⓀ Ⓚ

Ⓚ

Ⓚ

'|“ōžèi,»µ,±,µ,ãⓀ ↘

Ⓚ

~A'|“ōžèi,ê,ñ,»µ,±,µ,ãⓀ ↘

Ⓚ

Ⓚ

“«CE,¶X¶i,Æ,µ,°,«,·,çⓀ Ⓚ

Ⓚ

“«CE, ~A¶X¶i,Æ,µ,°,«,ê,ñ,·,çⓀ Ⓚ

Ⓚ

Ⓚ

”Ō•I¶i,î,ñ,ç,ã,µⓀ Ⓚ

Ⓚ

¶c'µ¶ú¶¶i,¶,ã,µ,ç,â,µ,¹,ñ,µ,â,µⓀ Ⓚ

Ⓚ

'xŽR'o<çŽèi,½,ç,´,ñ,»µ,±,µ,ãⓀ Ⓚ

Ⓚ

¶úŽ¾•à¶i,¹,ñ,µ,Ä,ŮⓀ Ⓚ

Ⓚ

Ⓚ

~÷•à'|Žèi,Æ,µ,Ů,»µ,µ,ãⓀ Ⓚ

Ⓚ

Ⓚ

~÷•à”w'|Žèi,Æ,µ,Ů,Í,ç,»µ,µ,ãⓀ Ⓚ

Ⓚ

Ⓚ

Ⓚ

'ož”¶ù•—¶i,»µ,¶,¹,ñ,Ō,µⓀ Ⓚ

Ⓚ

Ⓚ

Ⓚ

<çŽñ'ñ•G¶i,±,µ,µ,ã,Ä,ç,µ,ÄⓀ Ⓚ

Ⓚ

'O'|'Ů¶i,º,ñ,»µ,½,çⓀ Ⓚ

Ⓚ

Ⓚ

“où‘Ú_{i,Æ,α,1,ñ,½,¢} (K)

(K)

(K)

(K)

(K)

ú<|‘Ú_{i,1,ñ,«,ã,α,½,¢} (K)

(K)

(K)

Ēã‘|‘Ú_{i,±,α,»,α,½,¢} (K)

(K)

(K)

Ž^¾‘n‘|‘Ú_{i,μ,Á,¿,»,α,½,¢} (K)

(K)

(K)

”]gœ%oA<r_{i,Ä,ñ,μ,ñ,è,â,α,¢,ñ,«,á,} (K)

(K)

(K)

(K)

ŽÍ‘O•à_{i,μ,á,º,ñ,Ù} (K)

(K)

ŽÍĒã•à_{i,μ,á,±,α,Ù} (K)

(K)

-”Öžè_{i,Û,î,ñ,μ,ã} (K)

(K)

(K)

ŽÍ•àŽÍ‘|_{x_{i,μ,á,Ù,μ,á,»,α,·,¢} (K)}

(K)

(K)

~A_{x‘Ú_{i,é,ñ,·,¢,½,¢} (K)}

(K)

“öžè~A_{x_{i,±,α,μ,ã,é,ñ,·,¢} (K)}

(K)

~AŠÂ_{ú_{q_{i,é,ñ,©,ñ,1,ñ,μ,â,α} (K)}}

(K)

(K)

(K)

”j“žèH‘Ú_{i,i,Æ,α,μ,ã,μ,ã,α,½,¢} (<ß) (K)

(K)

(K)

Žμ⁻“V•²•I_{i,μ,ζ,¹,ϕ,Ä,ñ,Ô,ñ,ζ,ã,κ}) (<β)



İžè-Cèi_{i,³,ϕ,μ,ã,Û,κ,±,κ}j (<β)



“\g'o“õžè_{i,Ä,ñ,μ,ñ,»,κ,±,κ,μ,ã}j (<β)



~A“õžè”wP_{i,ê,ñ,±,κ,μ,ã,í,ϕ,μ,ã,κ}j i “w \mathbb{E} ã,©,çj



'Ê M'í Žž, ìf` fffbfjg

œ'Ê M'í Žž A'í Šž è, Æf` fffbfjg, ðŠy, µ, Þž-, ª, Å, «, Ü, · B

yf` fffbfjg, ì•û-@z

@fLfff%ofNf^[]fZfÇfNfgŽž A, Ü, ½, Í'í'í't, ìf[]fY%œ-Ê, Å, e, P, P, ð%ÿ, µ, Å, , ¾, ¾, ç B

†A, ·, é, Æ[]Af` fffbfjgfEfbf"fhfE, ª[]o, Å, «, Ü, · B

‡B%œ-Ê%º•", ì[]u'—[]MfRf[]f"fg[]v—, É[]Af[]fbfZ[]fW, ð'Å, ÿ[]ž, Ý[]A'—[]Mf{f^f", ð%ÿ, µ, Å'—[]M, µ, Å, -, ¾, ¾, ç B

‡C[]uŽó[]MfRf[]f"fg[]v—, É[]A'—[]M, µ, ½f[]fbfZ[]fW, ª•\Ž!, ¾, ê, Ü, · B
'í'í'Šž è, ªf[]fbfZ[]fW, ð'—[]M, µ, Å, «, ½[]é[]‡, à[]A, ±, ±, É•\Ž!, ¾, ê, Ü, · B
f[]fbfZ[]fW, ð'—, è, , ç[]A%i"b, ðŠy, µ, ñ, Å, , ¾, ¾, ç B

‡D[]u[]%Šú%»[]vf{f^f", ð%ÿ, ·, Æ[]A[]', «[]ž, Ü, ê, ½f[]fbfZ[]fW, ª[]Á<Ž, ¾, ê, Ü, · B

‡E[]u[]l—¹[]vf{f^f", ð%ÿ, ·, Æ[]Af` fffbfjgf, []fh, ð[]l—¹, µ, Ü, · B

